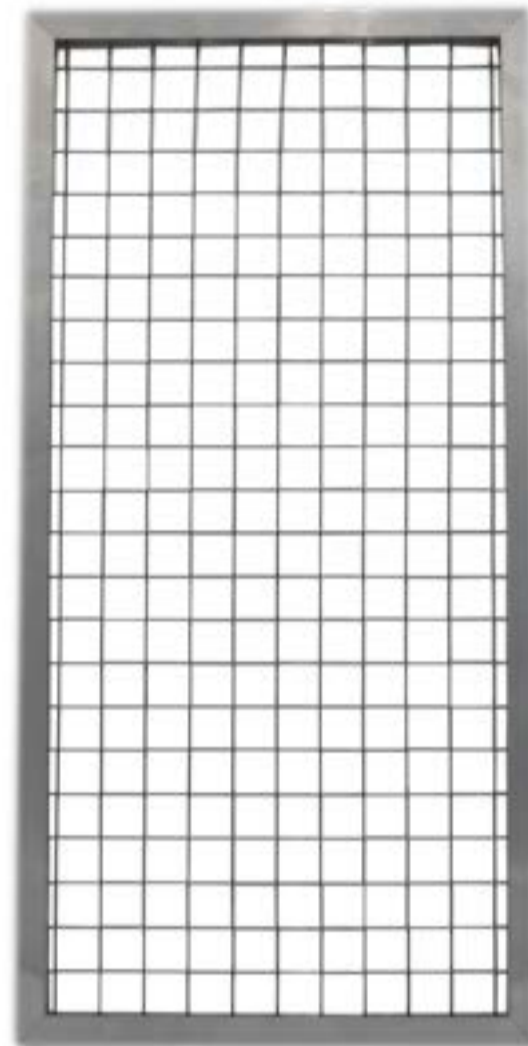


# EverFilter Reusable Frame



## Contact Information:

Purity Air Filters  
Phone: 941-275-6055  
Email: [orders@purityairfilters.com](mailto:orders@purityairfilters.com)  
Website: [www.purityairfilters.com](http://www.purityairfilters.com)

## PURITY AIR EverFilter Reusable Frame

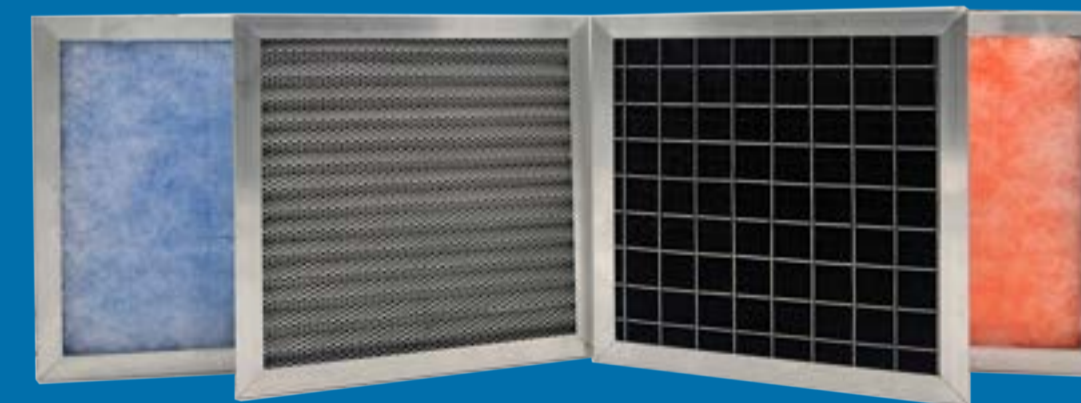
**Durable, Cost-Effective, and Versatile Reusable Air Filter Frame**

### Product Overview:

The EverFilter Aluminum Filter Media Holding Frames are engineered to provide a durable, long-lasting solution for both residential and commercial air filtration systems. Built to last, this reusable frame offers significant cost savings over disposable filters by allowing easy media re-placement. Whether used in residential HVAC systems, paint booths, dust collection setups, or industrial environments, the EverFilter frame provides a versatile and reliable filtration solution.

### Key Features:

- **Durable Aluminum Frame:** Constructed to last the lifetime of your HVAC system, the EverFilter frame is resistant to bending and is designed to withstand repeated use without being sucked into the system.
- **Standard & Custom Sizes Available:** Available in standard sizes as well as custom configurations to suit any HVAC system, ensuring a perfect fit every time.
- **Cost-Effective Filter Replacements:** The reusable frame significantly reduces filter replacement costs by pairing with pre-cut poly-lofted media pads, which are available at a fraction of the price of standard pleated filters.
- **Multiple Filter Media Options:** The EverFilter frame is compatible with various types of filtration media, allowing you to choose the best option for your specific application.
- **1" x 1" High Airflow Backing:** The frame's zinc-coated backing ensures high airflow while reducing strain on your HVAC system's motor, enhancing system efficiency.
- **Lightweight Construction:** Weighing just 1 lb., these frames are easy to handle and install, making them an ideal choice for both new installations and retrofitting existing systems.



### Applications:

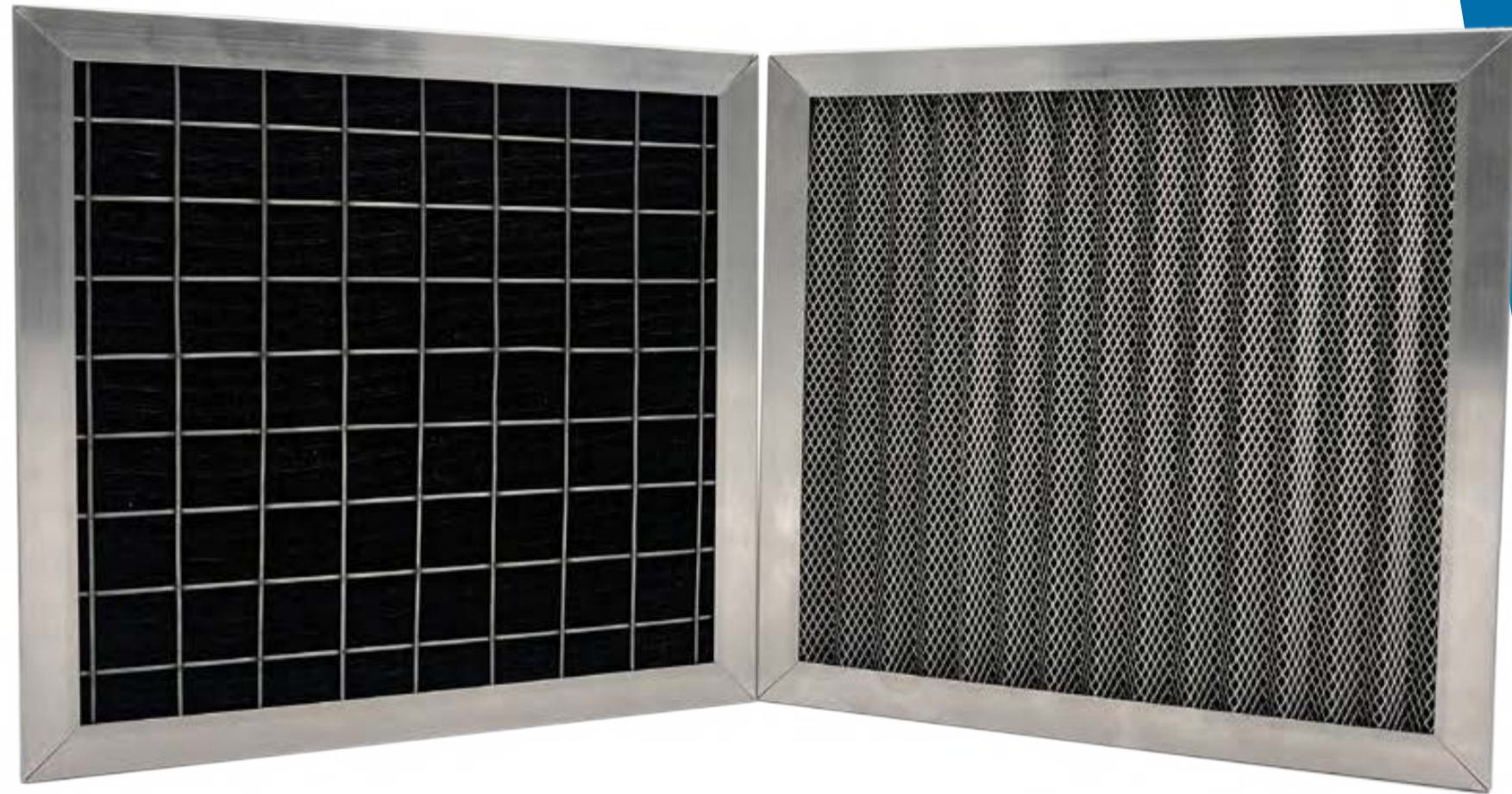
- Residential HVAC Systems
- Paint Booths
- Dust Collection Systems
- Machining Shops
- Apartment Units

### Filter Media Options:

- MERV-8 Filter Media Pad
- MERV-9 Filter Media Pad
- Carbon Filter Inserts
- Washable Filter Media Pad
- Fiberglass Filter Media
- Synthetic Filter Media
- And More!



# Electrostatic Filter



## EverFilter Electrostatic Filter

**Reusable, Washable Filtration Solution for Residential and Commercial HVAC Systems**

### Product Overview:

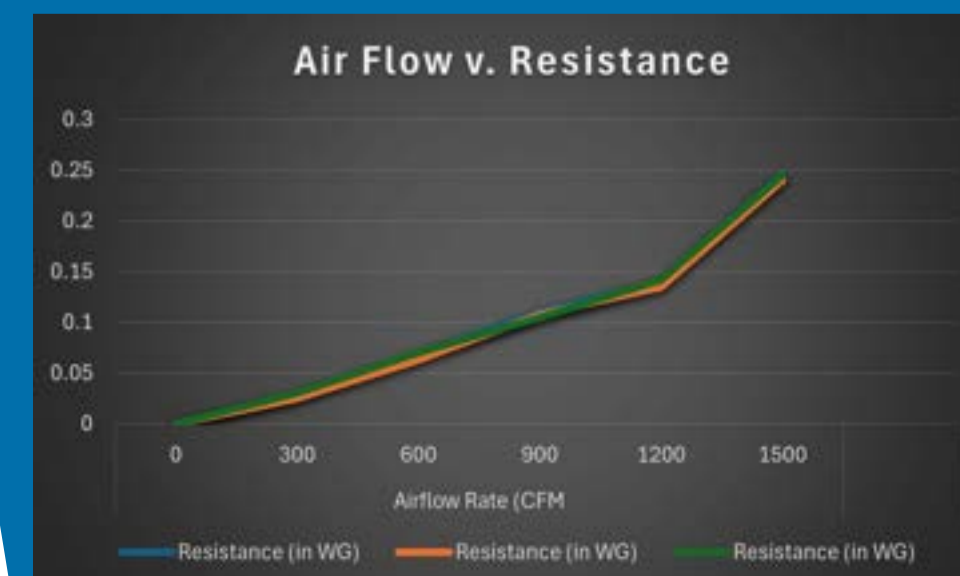
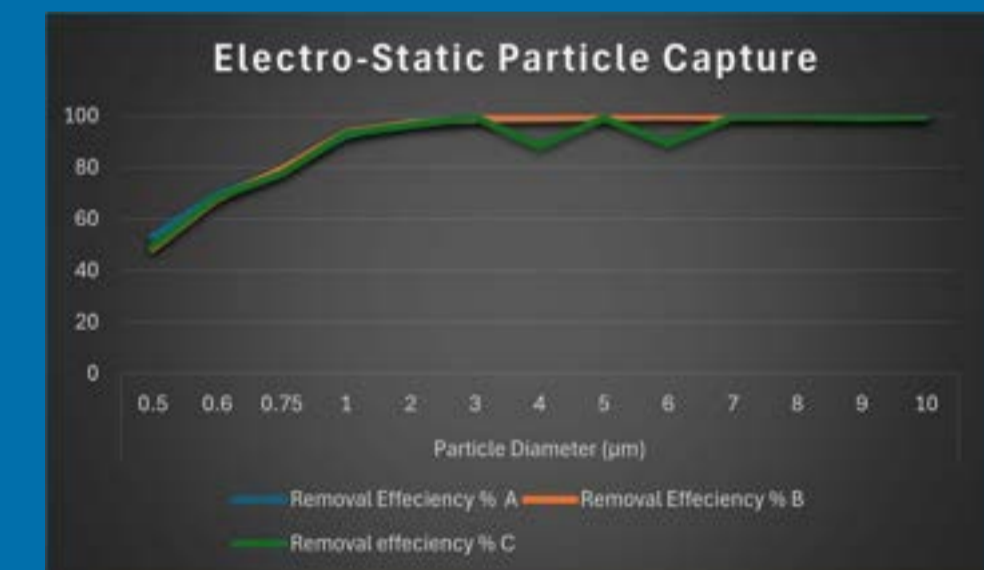
The EverFilter Electrostatic Filter is designed to provide superior air filtration for both residential and commercial HVAC systems. This reusable, washable filter captures and holds airborne particulates more effectively than traditional disposable filters, ensuring cleaner air and more efficient system performance. By attracting both small and large particles, the EverFilter significantly reduces contaminants, helping you breathe easier while lowering your energy costs.

### Key Features:

- **Highly Efficient:** Unlike traditional disposable filters, which capture only larger particles, EverFilter's advanced electrostatic technology efficiently traps a wider range of pollutants, enhancing both air quality and HVAC system efficiency.
- **Cost-Saving & Eco-Friendly:** EverFilter is reusable and washable, eliminating the need for frequent replacements. This makes it an environmentally friendly solution that reduces waste and offers long-term cost savings.
- **Standard & Custom Sizes Available:** Available in both standard and custom sizes, EverFilter fits most HVAC systems and can even be adapted to furnaces with hammock-style filter racks.

### Performance Data:

	Particle Diameter (µm)								
	0.5	0.6	0.75	1	2	3	4	5	6->10
Removal Efficiency % A	53.1	69.4	78.4	92.4	97.6	98.6	98.9	99.2	99.6
Removal Efficiency % B	48.6	67.8	79.1	93.6	97.1	99.1	99.2	99.8	99.7
Removal efficiency % C	49.3	68.3	77.6	93.1	96.4	99.4	88.1	99.1	99.6



### Airflow vs. Resistance

	Airflow Rate (CFM)					
	0	300	600	900	1200	1500
Resistance (in WG)	0	0.029	0.069	0.11	0.14	0.246
Resistance (in WG)	0	0.025	0.063	0.108	0.135	0.24
Resistance (in WG)	0	0.03	0.07	0.105	0.142	0.245



**Contact Information:**  
 Purity Air Filters  
 Phone: 941-275-6055  
 Email: [orders@purityairfilters.com](mailto:orders@purityairfilters.com)  
 Website: [www.purityairfilters.com](http://www.purityairfilters.com)



# Electrostatic Filter

## EverFilter Electrostatic Filter

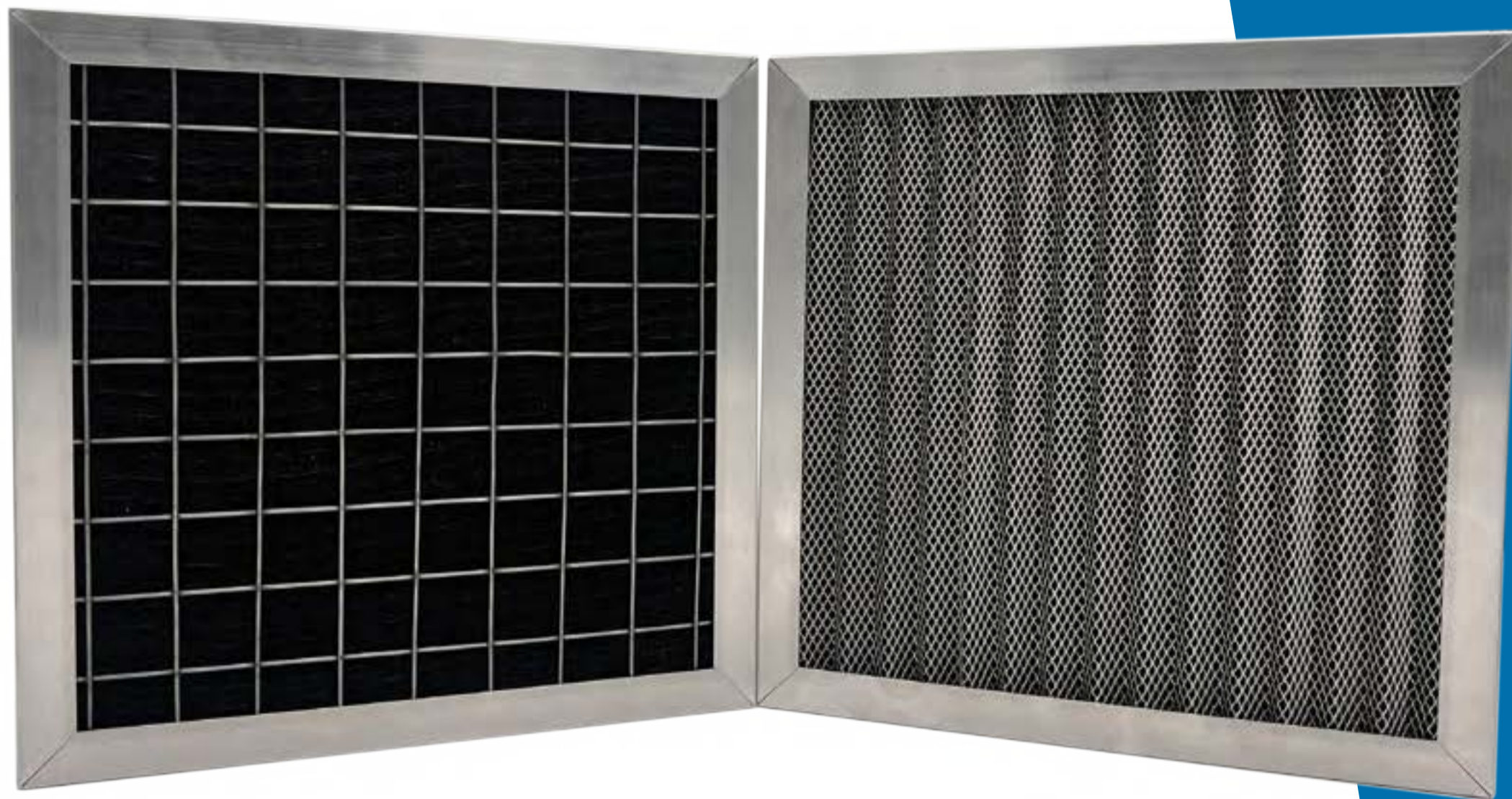
*Reusable, Washable Filtration Solution for Residential and Commercial HVAC Systems*

### Simple Installation and Maintenance:

- **Easy Installation:** Replacing your old disposable filter with EverFilter is quick and easy. Simply remove the existing filter and slide in the EverFilter without any need for system modifications.
- **Monthly Cleaning:** To maintain optimal performance, clean the EverFilter once a month by rinsing it with water. For tougher dirt or grease, use a mild detergent and rinse thoroughly. The electro-static panels and particles inside the accumulator chamber are easily washed out through the in-tegrated drainage ports.

### Maximize HVAC Performance:

By reducing airflow resistance, EverFilter allows your HVAC system to run more efficiently. This not only improves air quality but also reduces energy consumption. Be sure to check your sys-tem's pressure drop and air velocity requirements to ensure optimal performance.

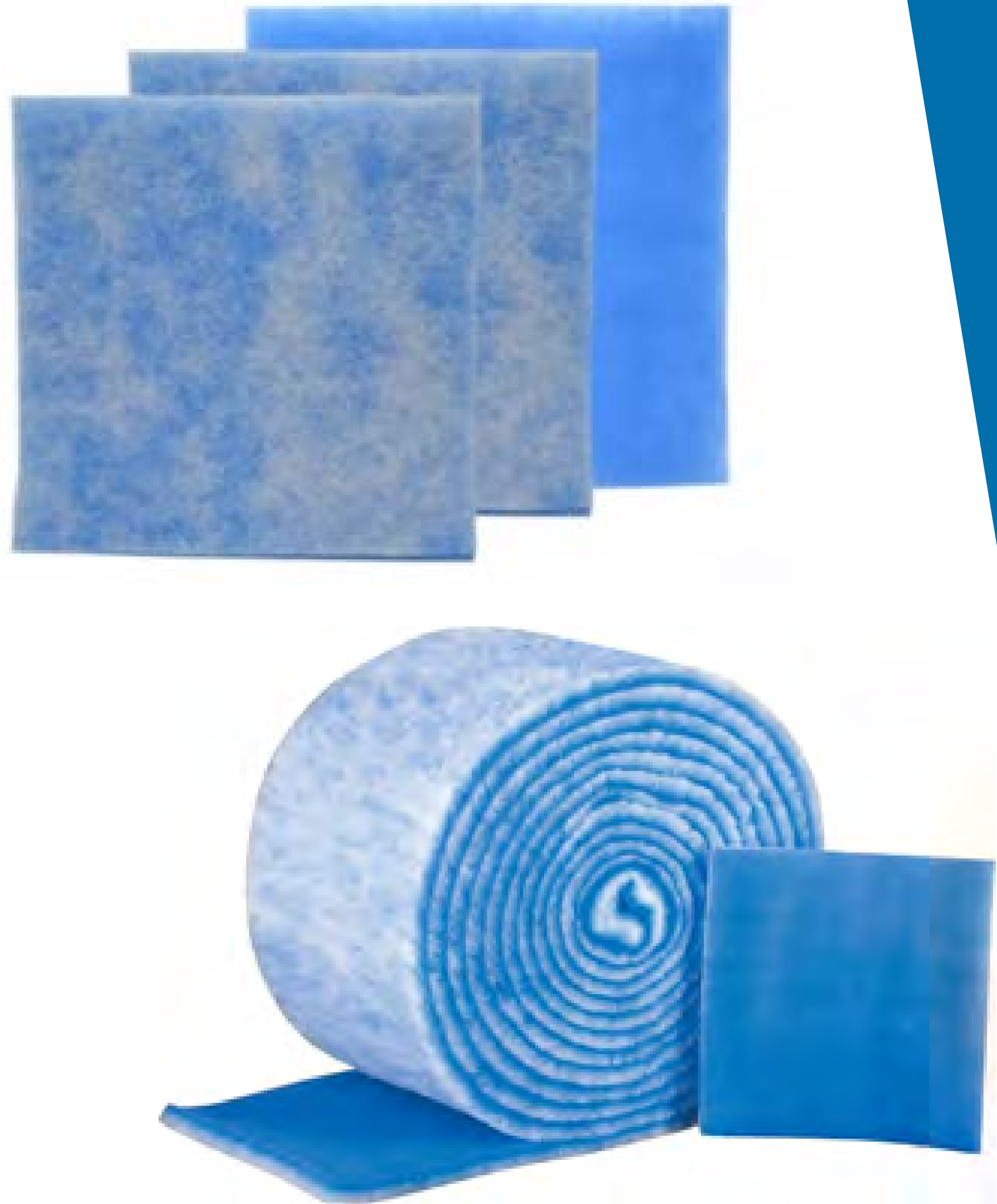


#### Contact Information:

Purity Air Filters  
Phone: 941-275-6055  
Email: [orders@purityairfilters.com](mailto:orders@purityairfilters.com)  
Website: [www.purityairfilters.com](http://www.purityairfilters.com)



# MERV 8 Polyester



## MERV 8 Polyester Filter Media *Premium Air Filtration Solution*

### Product Overview:

The MERV 8 Polyester Filter Media is engineered for exceptional dust-holding capacity and long-lasting performance. Suitable for both commercial and residential HVAC systems, this media is designed to capture a wide range of airborne particles while maintaining high-efficiency airflow. The uniform, high-loft polyester fibers ensure superior depth loading and particle capture, all within a durable, lightweight media.

### Key Features:

- Maximum Operating Temperature: 200° F
- Dust Holding Capacity: 186 grams
- Recommended Final Resistance: 1.0" w.g.
- MERV Rating: MERV 8
- Weight: 0.67 oz./sq. ft
- Media Thickness: 1" and 2" Nominal

### Product Highlights:

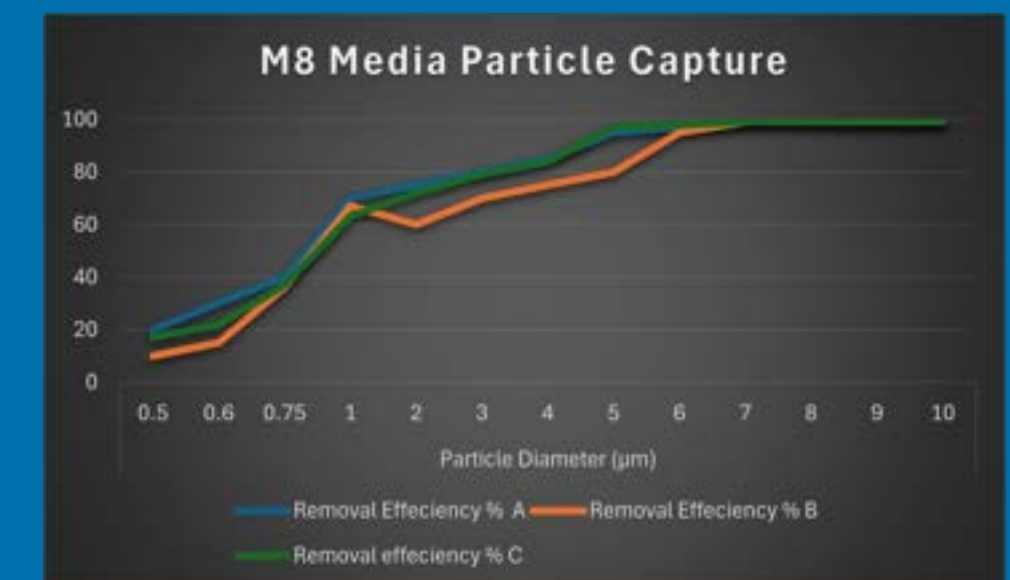
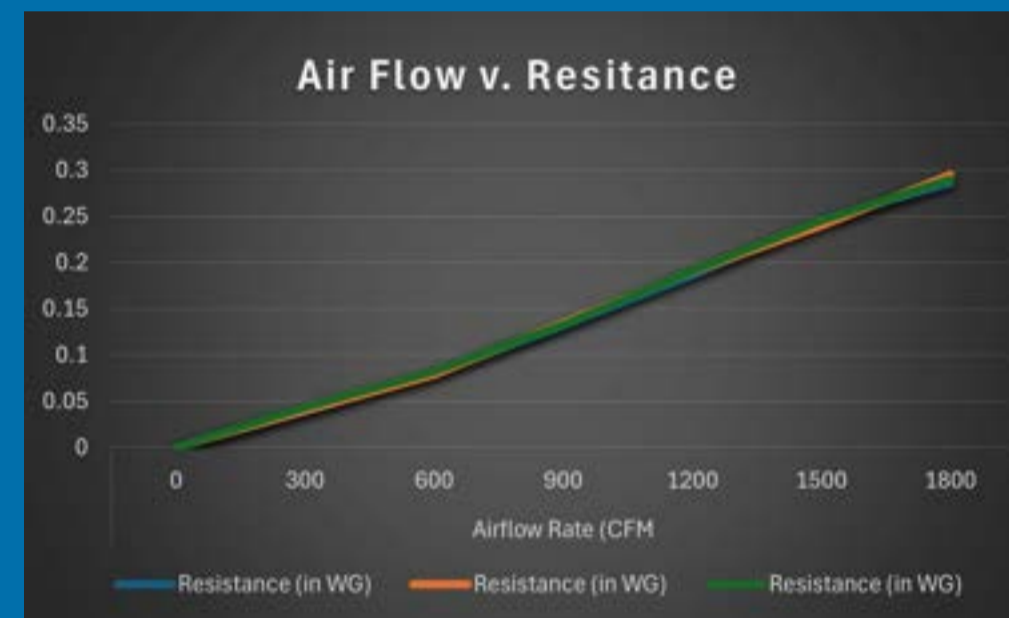
- Tackified for Enhanced Filtration: The proprietary tackifier captures and holds smaller particles, increasing the media's dust-holding capacity and improving overall air quality.
- LEED® Certification Compliant: Meets requirements for sustainable building projects.
- Low Initial Resistance: 0.095" w.g. @ 300 FPM, ensuring minimal airflow resistance and enhanced energy efficiency.
- Durable Design: High-loft media construction ensures excellent resilience under various environmental conditions.
- Pre-Cut Pads & Bulk Rolls: Available in pre-cut pads or bulk rolls (1 Inch: 20" x 90 ft or 25" x 90 ft & 2 Inch: 25" x 60ft roll size) for custom sizes and large-scale applications.

### Air Flow vs. Resistance:

The MERV 8 media maintains low airflow resistance across a range of CFM rates, ensuring optimal HVAC system efficiency.

### Particle Capture Efficiency:

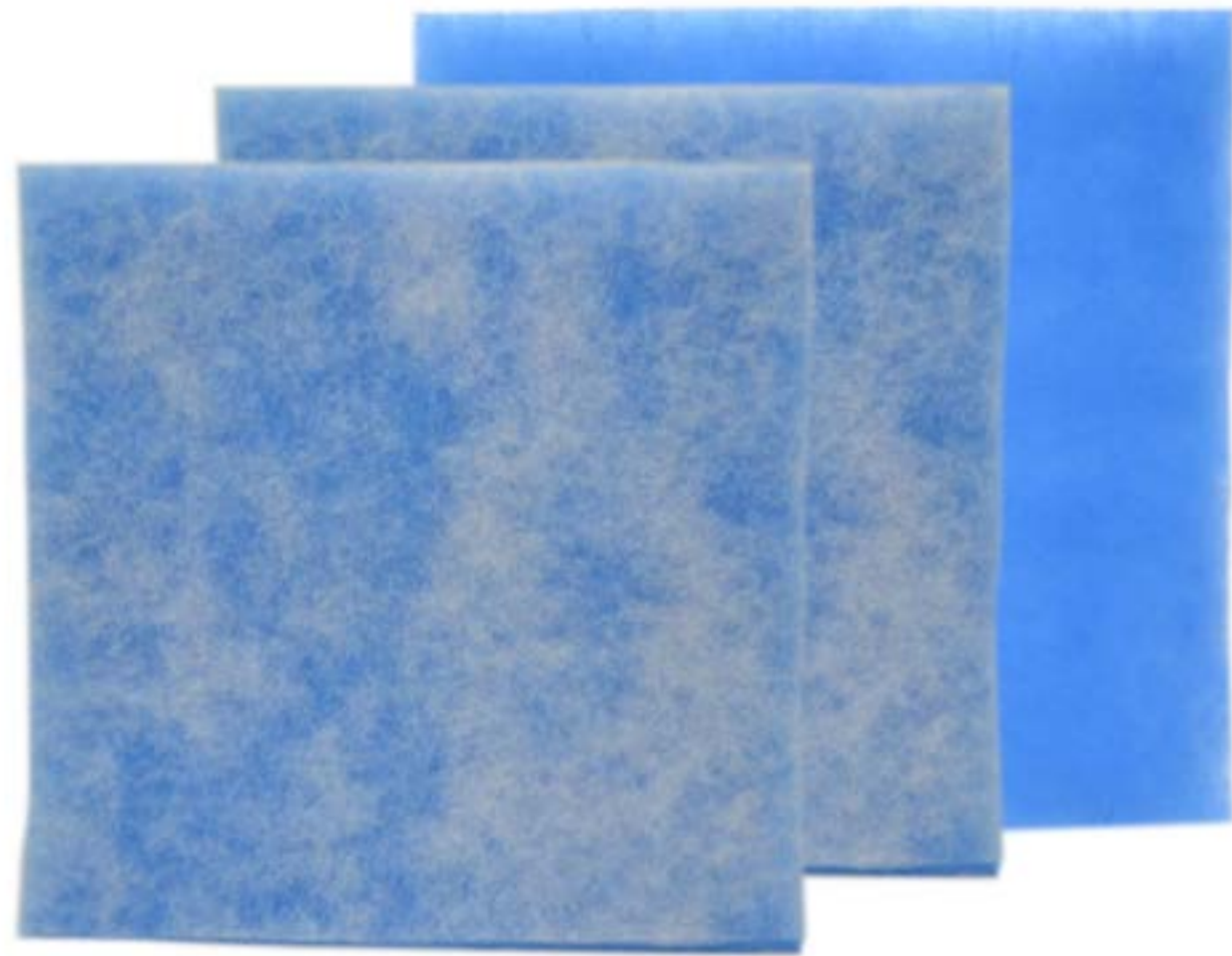
With excellent removal efficiency for particles ranging from 0.5  $\mu\text{m}$  to 10  $\mu\text{m}$ , the multi-layer poly-ester media captures a variety of contaminants, enhancing indoor air quality.



### Contact Information:

Purity Air Filters  
Phone: 941-275-6055  
Email: [orders@purityairfilters.com](mailto:orders@purityairfilters.com)  
Website: [www.purityairfilters.com](http://www.purityairfilters.com)

# MERV 8 Polyester Media



## MERV 8 Polyester Filter Media *Premium Air Filtration Solution*

### Applications:

- Residential and Commercial HVAC Systems
- Industrial Filtration
- Custom Air Filtration Solutions

### Installation & Maintenance:

1. Easy Installation: Simply replace your existing filter with the MERV 8 polyester media, secured by our EverFilter Media Holding Frame ( ATTN: Stabilizing frame required for most applications)
2. Cleaning Recommendations: Replace the filter every 1-3 months for best performance, depending on system usage.



### Contact Information:

Purity Air Filters  
Phone: 941-275-6055  
Email: [orders@purityairfilters.com](mailto:orders@purityairfilters.com)  
Website: [www.purityairfilters.com](http://www.purityairfilters.com)



# Washable M6 Rigid Media



**Contact Information:**  
Purity Air Filters  
Phone: 941-275-6055  
Email: [orders@purityairfilters.com](mailto:orders@purityairfilters.com)  
Website: [www.purityairfilters.com](http://www.purityairfilters.com)

## Washable M6 Rigid Media

*Durable, Washable Air Filtration for Superior Moisture Resistance*

### Product Overview:

The Purity Air Washable M6 Rigid Media is engineered with advanced non-woven polyester technology, offering exceptional strength, rigidity, and durability. Designed for residential, commercial, and industrial HVAC systems, this media is moisture-resistant, washable, and built to last. Its bi-directional airflow design ensures easy installation and optimal performance, making it the ideal solution for maintaining clean air while protecting HVAC systems from harmful particulates.

### Key Features:

- **Advanced Non-Woven Polyester Technology:** The fibers are randomly dispersed in all directions, creating a uniform, durable media that offers superior strength and rigidity.
- **Bi-Directional Airflow Design:** The media is designed to be installed with either side facing out, simplifying installation and improving the overall efficiency of the air filtration system.
- **High-Efficiency Filtration:** Rated at MERV 6, Purity Air Washable M6 Rigid Media efficiently captures high-volume contaminants, ensuring superior air quality in various applications.
- **Moisture Resistance:** This media effectively blocks water and mist without absorbing moisture or sagging, making it perfect for environments with high humidity.
- **No Metal Frame Required:** The rigid media can be installed with or without a metal holding frame and can be cut to fit specific dimensions, offering versatility for different system needs.
- **Water Penetration Tested:** Passed independent testing using UL-50 rain guidelines, ensuring protection for sensitive equipment by preventing water droplets from penetrating the filter.
- **Washable & Reusable:** This media is washable, allowing for multiple uses. Its edges are smooth and free of sharp components, making it a safer alternative to fiberglass or hog hair filters.

### Product Specifications:

- Nominal Thickness: 1.0"
- Product Weight: 24.3 +/- 2.0 oz. per square yard
- Initial Air Flow Resistance @ 1200 CFM: 0.06 in WG
- Arrestance Efficiency: 80%
- Dust Holding Capacity: 343 gms
- MERV Rating: 6
- Water Barrier: UL-50 Water Barrier CID Test passed
- Maximum Operating Temperature: 200°F
- Washable: Yes
- Antimicrobial Properties: No
- Warranty: 5 years

### Applications:

The Purity Air Washable M6 Rigid Media is ideal for use in HVAC systems across residential, commercial, and industrial environments. Its moisture resistance, high durability, and ease of use make it a reliable solution for ensuring clean air and protecting sensitive HVAC systems from particulates.



# 5mm Carbon Filter Media



## 5mm Carbon Filter Media (MERV-6) *Highly Effective Activated Carbon Filtration for Odor and Fume Control*

### Product Overview:

The Purity Air 5mm Carbon Filter Media is designed using advanced activated carbon technology to effectively remove odors and fumes from recirculated air. This synthetic media, made from 100% polyester, is impregnated with finely ground coconut shell-based activated carbon to provide superior adsorption capabilities. The carbon is heat-set onto the media, ensuring that it re-tains its coating, offering long-lasting performance in both residential and commercial HVAC systems.

### Key Features:

- Activated Carbon Technology: Finely ground coconut shell-based activated carbon ensures high adsorption capacity for effectively removing odors and harmful fumes.
- Heat-Set Coating: The activated carbon is securely bonded to the polyester media, allowing for rinsing and vacuuming without losing the media's effectiveness.
- Odor and Fume Control: Adsorbs odors and fumes through millions of tiny pores, permanently removing contaminants from the air rather than masking them.
- Durable and Long-Lasting: Designed for repeated use, the media can withstand multiple cleanings while maintaining its filtration performance.

### Product Specifications:

- Model: PAF-5MM-POLY
- Media Thickness: 3/16" nominal (+/- 0.03 inches)
- Media Weight: 3.2 oz polyester/sq yd
- Carbon Coating Weight: 4.8 +/- 0.72 oz carbon/sq yd
- Total Product Weight: 8.0 +/- 1.2 oz/sq yd
- Color: Black
- Air Permeability: 650 +/- 100 CFM @ 0.5 in WG
- Roll Size: 48" x 100 LY
- UL Flammability Classification: Yes (Classified as to Flammability Only)

*Pair with Poly-Lofted Media for  
2 Stage Filtering*



### Applications:

The Purity Air 5mm Carbon Filter Media is ideal for HVAC systems in residential, commercial, and industrial settings where odor and fume control are essential. Its ability to efficiently adsorb contaminants makes it an excellent choice for environments with high levels of odors or harmful fumes, such as kitchens, manufacturing facilities, and laboratories.



### Contact Information:

Purity Air Filters  
Phone: 941-275-6055  
Email: [orders@purityairfilters.com](mailto:orders@purityairfilters.com)  
Website: [www.purityairfilters.com](http://www.purityairfilters.com)



# MERV 14



## Contact Information:

Purity Air Filters  
Phone: 941-275-6055  
Email: [orders@purityairfilters.com](mailto:orders@purityairfilters.com)  
Website: [www.purityairfilters.com](http://www.purityairfilters.com)

## ASHRAE Cell Filter: MERV 14

### High-Efficiency Filtration for Commercial and Industrial HVAC Systems

#### Product Overview:

The ASHRAE Cell Filter: MERV 14 is designed to deliver superior air filtration in commercial and industrial HVAC systems. Featuring micro glass fiber media, this filter offers exceptional particle capture efficiency, making it ideal for environments that demand high air quality. The single-header galvanized steel (GL) frame provides structural integrity and durability, ensuring long-lasting performance under demanding conditions.

#### Key Features:

- **MERV 14 Efficiency:** Rated for MERV 14, this filter effectively captures particles as small as 0.3 microns, including dust, pollen, mold spores, and other airborne contaminants.
- **Micro Glass Media:** The advanced micro glass fiber media ensures superior filtration, maintaining optimal airflow while reducing resistance to air movement.
- **Single Header Frame (GL):** Constructed with a galvanized steel (GL) frame, the single-header design provides increased durability and rigidity, making it suitable for high-demand HVAC systems.
- **Exceptional Dust Holding Capacity:** The filter can hold up to 139.6 grams of dust, ensuring long-lasting performance and reducing the frequency of filter changes.
- **Durable and Reliable:** Engineered for both high-capacity and long service life, this filter ensures consistent performance in environments that require high levels of air filtration.

#### Product Specifications:

- **Test Air Flow Rate:** 1968 CFM / 492 FPM (0.929 m<sup>3</sup>/s)
- **Initial Resistance:** 0.421 in. WG / 105.3 Pascal
- **Final Resistance:** 1.500 in. WG / 375 Pascal
- **Minimum Efficiency Rating Value (MERV):** MERV 14 @ 1968 CFM
- **Dust Holding Capacity:** 139.6 grams
- **Dust Fed to Final Resistance:** 140.1 grams
- **Arrestance Efficiency:** 99.6%
- **Particle Capture Efficiency:**
  - 0.3 to 1.0 Microns (E1): 75.1%
  - 1.0 to 3.0 Microns (E2): 95.5%
  - 3.0 to 10 Microns (E3): 99.3%

#### Applications:

The ASHRAE Cell Filter: MERV 14 is ideal for use in commercial and industrial HVAC systems where high-efficiency filtration is critical. It is suitable for environments such as hospitals, laboratories, manufacturing facilities, and office buildings, where maintaining superior indoor air quality is essential.



# MERV 14



## MERV 14 FILTER

### SPECS:

EFFICIENCY: MERV 14  
MEDIA: Micro Glass  
FRAME: GI Single Header

### Sizes:

**24" x 24" x 12" (592x592x292)**

PART NUMBER: 11-24-1420300-84-0

*PRICE: Quote*

**12" x 24" x 12" (287x592x292)**

PART NUMBER: 11-24-1420300-83-0

*PRICE: Quote*

**20" x 24" x 12" (490x592x292)**

PART NUMBER: 11-24-1420300-151-0

*PRICE: Quote*

**20" x 20" x 12" (490x490x292)**

PART NUMBER: 11-24-1420300-1289-0

*PRICE: Quote*



### Contact Information:

Purity Air Filters  
Phone: 941-275-6055  
Email: [orders@purityairfilters.com](mailto:orders@purityairfilters.com)  
Website: [www.purityairfilters.com](http://www.purityairfilters.com)



# CCRV Carbon Filter



## CCRV Carbon Filter

*High-Performance Carbon Filtration for VOC and Gas Removal*

### Product Overview:

The CCRV Carbon Filter is engineered using 950 GSM micro-granulate adsorbent carbon media embedded between two layers of non-woven synthetic material. Its close mini-pleated construction ensures a high surface area, maximizing the filter's adsorption capacity. The densely packed carbon granules effectively remove a broad range of harmful compounds, making this filter ideal for applications requiring high-efficiency gas and odor control.

### Key Features:

- **High Adsorption Carbon Media:** Utilizes 950 GSM micro-granulate carbon for superior adsorption of volatile organic compounds (VOCs), vehicle exhaust, sulfur compounds, NO<sub>x</sub>, ammonia, ozone, and other gases.
- **Mini Pleat Design:** Provides a large surface area, enhancing the spontaneity and efficiency of adsorption.
- **Broad Spectrum Gas Removal:** Efficiently removes VOCs and other airborne chemical compounds for improved indoor air quality.

### Performance Specifications:

Media Grade	Initial Resistance ("Wg) @ 2.54 m/s
MERV 10	0.52 w.g.
MERV 13	0.60 w.g.
MERV 15	0.65 w.g.

### Filter Size and Carbon Loading:

Filter Size (W x H x D)	Media Area (Sq. Ft.)	Carbon Loading
24" x 24" x 12"	66 sq. ft.	10.5 lbs

### Applications:

The CCRV Carbon Filter is ideal for environments where high-level gas and odor control is essential. Its ability to remove a wide range of volatile organic compounds and harmful gases makes it a perfect choice for commercial and industrial HVAC systems focused on improving indoor air quality.



### Contact Information:

Purity Air Filters  
Phone: 941-275-6055  
Email: [orders@purityairfilters.com](mailto:orders@purityairfilters.com)  
Website: [www.purityairfilters.com](http://www.purityairfilters.com)



# CCRV LV Carbon Filter



## CCRV LV Carbon Filter *High-Efficiency Carbon Filtration for VOC and Gas Removal*

### Product Overview:

The CCRV LV Carbon Filter uses 500 GSM micro-granulate adsorbent carbon media, embedded between two layers of non-woven synthetic material in a close mini-pleated construction. This design provides an extensive surface area for high spontaneity of adsorption, making it highly effective at removing a wide range of airborne contaminants and gases. The filter is ideal for environments requiring efficient gas and odor control while maintaining low resistance.

### Key Features:

- **500 GSM Micro-Granulate Carbon Media:** Effectively adsorbs volatile organic compounds (VOCs), vehicle exhaust, sulfur compounds, NO<sub>x</sub>, ammonia, ozone, and other gases.
- **Mini Pleat Construction:** Ensures a large surface area for improved adsorption efficiency.
- **Broad Spectrum Gas Removal:** Removes a wide range of harmful gases and airborne contaminants for enhanced air quality.

### Performance Specifications:

Media Grade	Initial Resistance ("Wg) @ 2.54 m/s
MERV 10	0.28 w.g.
MERV 13	0.32 w.g.
MERV 15	0.36 w.g.

### Filter Size and Carbon Loading:

Filter Size (W x H x D)	Media Area (Sq. Ft.)	Carbon Loading
24" x 24" x 12"	66 sq. ft.	5.9 lbs

### Applications:

The CCRV LV Carbon Filter is designed for use in commercial and industrial HVAC systems where the removal of VOCs and other gases is essential. Its lightweight carbon loading and efficient filtration make it an excellent choice for improving indoor air quality.



### Contact Information:

Purity Air Filters  
Phone: 941-275-6055  
Email: [orders@purityairfilters.com](mailto:orders@purityairfilters.com)  
Website: [www.purityairfilters.com](http://www.purityairfilters.com)



# CCRV Carbon Filter



## CCRV CARBON FILTER

### SPECS:

EFFICIENCY: MERV 14  
MEDIA: Carbon Microgranules  
FRAME: ABS Plastic

### Sizes:

**24" x 24" x 12"** (592x592x292mm)

PART NUMBER: 11-32-2110000-84-0

*PRICE: Quote*

**24" x 24" x 12"** (592x592x292mm)

PART NUMBER: 11-32-1210000-84-0

*PRICE: Quote*

**12" x 24" x 12"** (592x287x292mm)

PART NUMBER: 11-32-1210000-344-0

*PRICE: Quote*

**20" x 24" x 12"** (592x592x292mm)

PART NUMBER: 11-32-1210310-310-0

*PRICE: Quote*

**20" x 24" x 12"** (492x594x292mm)

PART NUMBER: 11-32-1310000-310-0

*PRICE: Quote*



### Contact Information:

Purity Air Filters  
Phone: 941-275-6055  
Email: [orders@purityairfilters.com](mailto:orders@purityairfilters.com)  
Website: [www.purityairfilters.com](http://www.purityairfilters.com)



# HEPA HV (5V) / HVXL (6V)



## HEPA HV (5V) / HVXL (6V) Filter High-Volume HEPA Filtration for Maximum Airflow and Efficiency

### Product Overview:

The HEPA HV (5V) and HVXL (6V) Filters are designed with micro glass fiber media in a mini-pleat V-bank configuration, ensuring maximum airflow and superior filtration performance. These filters are capable of handling airflows up to 2400 CFM, while maintaining a low-pressure drop, resulting in extended filter life and efficient HVAC operation. PTFE media is also available as an option for specific applications.

### Key Features:

- Micro Glass Fiber Media: Provides high-efficiency filtration for capturing even the smallest airborne particles.
- Mini-Pleat V-Bank Design: Optimizes the media area with V-shaped pleats, allowing for higher airflow capacity and lower pressure drop.
- Available in Multiple Frame Types: Offered in standard ABS, GI, AI, SS, and MDF frames to suit various installation requirements.
- Efficiency Grades: Available in E11, E12, H13, and H14 efficiency grades to meet a wide range of air quality needs.

### Performance Specifications:

Media Grade	Initial Resistance ("Wg) @ 2.54 m/s	Initial Resistance ("Wg) @ 3.0 m/s
E11	0.61 w.g. (HV)	0.55 w.g. (HVXL)
E12	1.05 w.g. (HV)	0.88 w.g. (HVXL)
H13	1.15 w.g. (HV)	1.02 w.g. (HVXL)
H14	1.16 w.g. (HV)	1.18 w.g. (HVXL)

### Filter Size and Carbon Loading:

Filter Size (W x H x D)	Media Area (Sq. Ft.)
HV Model 24" x 24" x 12" - Box	291 sq. ft.
HVXL Model 24" x 24" x 12" - Box	440 sq. ft.

### Applications:

The HEPA HV and HVXL Filters are ideal for high-volume airflow systems in commercial and industrial environments. Their advanced filtration technology ensures exceptional particle removal efficiency while maintaining low resistance, making them suitable for cleanrooms, hospitals, laboratories, and other facilities where air quality is critical.



### Contact Information:

Purity Air Filters  
Phone: 941-275-6055  
Email: [orders@purityairfilters.com](mailto:orders@purityairfilters.com)  
Website: [www.purityairfilters.com](http://www.purityairfilters.com)



## HEPA HV (5V) / HVXL (6V)



## HEPA HC (5V) / HVXL (6V) FILTER

### SPECS:

EFFICIENCY: 99.99% / H13

MEDIA: Micro Glass

FRAME: ABS Plastic (5V)

### Sizes:

**24" x 24" x 12"** (610x610x292)

PART NUMBER: 11-25-14130030-31-8

PRICE: Quote

**12" x 24" x 12"** (610x305x292)

PART NUMBER: 11-25-14130000-405-0

PRICE: Quote

**24" x 24" x 12"** (610x610x292)

PART NUMBER: 11-25-14130001-31-1

PRICE: Quote

**23.3/8" x 23.3/8" x 11.1/2"** (594x594x292)

PART NUMBER: 11-25-14130030-1252-8

PRICE: Quote

**11.3/8" x 23.3/8" x 11.1/2"** (594x289x292)

PART NUMBER: 11-25-14130030-1253-8

PRICE: Quote



### Contact Information:

Purity Air Filters

Phone: 941-275-6055

Email: [orders@purityairfilters.com](mailto:orders@purityairfilters.com)

Website: [www.purityairfilters.com](http://www.purityairfilters.com)



# HEPA SC/HC FILTER



## HEPA SC/HC (Standard/High Capacity) Filter Advanced HEPA Filtration for High and Standard Capacity Applications

### Product Overview:

The HEPA SC/HC Filters are designed for both standard and high-capacity filtration needs, utilizing micro glass fiber media in a deep pleat configuration. These filters are available in a variety of frame materials, including GI, AI, SS, and MDF, and come with an optional powder-coated, ex-panded metal face guard for added durability. They are perfect for applications requiring high-efficiency air filtration in environments where air quality is critical.

### Key Features:

- Standard and High-Capacity Models: Available in both SC (Standard Capacity) and HC (High Capacity) versions to meet varying airflow and filtration requirements.
- Micro Glass Fiber Media: Provides high-efficiency filtration through deep pleat construction for enhanced particle capture.
- Optional Face Guard: Available with a powder-coated, expanded metal face guard for increased protection and durability.
- Multiple Frame Options: Available in GI, AI, SS, and MDF frames with a dry seal gasket to ensure a secure and leak-free installation.
- Efficiency Grades: Offered in E12, H13, and H14 to suit a variety of air quality needs.

### Performance Specifications:

Model	Media Grade	Initial Resistance ("Wg) @ 1.2 m/s	Initial Resistance ("Wg) @ 1.7 m/s
SC Model	E12	0.80 w.g.	N/A
	H13	0.83 w.g.	N/A
	H14	0.91 w.g.	N/A
HC Model	E12	N/A	0.81 w.g.
	H13	N/A	0.87 w.g.
	H14	N/A	0.95 w.g.

### Filter Size and Carbon Loading:

Filter Size (W x H x D)	SC Model Media Area (Sq. Ft.)	HC Model Media Area (Sq. Ft.)
24" x 24" x 12" - Box	189 sq. ft.	249 sq. ft.
24" x 24" x 12" - DTF	166 sq. ft.	220 sq. ft.

### Applications:

The HEPA SC/HC Filters are ideal for use in cleanrooms, pharmaceutical manufacturing, hospitals, and other critical environments where high-efficiency filtration is essential. The combination of standard and high-capacity options allows for customization to specific airflow and efficiency requirements.



### Contact Information:

Purity Air Filters  
Phone: 941-275-6055  
Email: [orders@purityairfilters.com](mailto:orders@purityairfilters.com)  
Website: [www.purityairfilters.com](http://www.purityairfilters.com)



# HEPA SC FILTER



# HEPA HC FILTER

## SPECS:

EFFICIENCY: H12 / 99.97%

MEDIA: Micro Glass

FRAME: GI DTF Type

## Sizes:

**23" 3/8 x 23" 3/8 x 11" 1/2 (594x594x292mm),**

PART NUMBER: 11-28-1130205-1252-1

*PRICE: Quote*

**11" 3/8 x 23" 3/8 x 11" 1/2 (289x594x292mm)**

PART NUMBER: 11-28-1130205-7051-1

*PRICE: Quote*

**24" x 24" x 12" (610x610x292mm)**

PART NUMBER: 11-28-1230200-31-0

*PRICE: Quote*

**12" x 24" x 12" (610x305x292mm)**

PART NUMBER: 11-28-1230200-405-0

*PRICE: Quote*



## Contact Information:

Purity Air Filters

Phone: 941-275-6055

Email: [orders@purityairfilters.com](mailto:orders@purityairfilters.com)

Website: [www.purityairfilters.com](http://www.purityairfilters.com)



# HEPA HC FILTER



## HEPA HC FILTER

### SPECS:

EFFICIENCY: 99.97% / E12

MEDIA: Micro Glass

FRAME: GI DTF Type

### Sizes:

**24" x 24" x 12"** (610x610x292mm)

PART NUMBER: 11-30-1130220-31-1

*PRICE: Quote*

**12" x 24" x 12"** (610x305x292mm)

PART NUMBER: 11-30-1130220-405-1

*PRICE: Quote*

**24" x 24" x 12"** (610x610x292mm)

PART NUMBER: 11-30-1230220-31-6

*PRICE: Quote*

**24" x 24" x 12"** (610x610x292mm)

PART NUMBER: 11-30-1230220-31-1

*PRICE: Quote*

**12" x 24" x 12"** (610x305x292mm)

PART NUMBER: 11-30-1230220-405-1

*PRICE: Quote*



### Contact Information:

Purity Air Filters

Phone: 941-275-6055

Email: [orders@purityairfilters.com](mailto:orders@purityairfilters.com)

Website: [www.purityairfilters.com](http://www.purityairfilters.com)



# HEPA HC FILTER



## HEPA HC FILTER

### SPECS:

EFFICIENCY: 99.99% / H13

MEDIA: Micro Glass

FRAME: GI DTF Type

### Sizes:

**23" 3/8 x 23" 3/8 x 11" 1/2 (594x594x292mm)**

PART NUMBER: 11-30-1230200-1252-0

*PRICE: Quote*

**24" x 24" x 12" (610x610x292mm)**

PART NUMBER: 11-30-1230120-31-1

*PRICE: Quote*

**12" x 24" x 12" (610x305x292mm)**

PART NUMBER: 11-30-1230100-405-0

*PRICE: Quote*

**23" 3/8 x 23" 3/8 x 11" 1/2 (594x594x292mm)**

PART NUMBER: 11-30-1230120-1252-1

*PRICE: Quote*

**11" 3/8 x 23" 3/8 x 11" 1/2 (594x289x292mm)**

PART NUMBER: 11-30-1230120-1253-1

*PRICE: Quote*



### Contact Information:

Purity Air Filters

Phone: 941-275-6055

Email: [orders@purityairfilters.com](mailto:orders@purityairfilters.com)

Website: [www.purityairfilters.com](http://www.purityairfilters.com)



# Rigid PAC Box Filter



## Rigid PAC Box Filter

### *High-Efficiency Rigid Box Filter for VAV Systems and Turbulent Airflow Applications*

#### Product Overview:

The Rigid PAC Box Filter features a deep pleated synthetic media pack reinforced with expanded metal mesh and encased in a durable metal frame. Each edge of the media is securely bonded to the frame, ensuring a leak-free, stable filter operation. Designed with radial V-pleats and die-cut pleat stabilizers, this filter provides optimal rigidity and performance in variable air volume (VAV) systems and turbulent airflow environments.

#### Key Features:

- Radial V-Pleat Design: Ensures consistent filtration efficiency and provides enhanced stability under varying airflow conditions.
- Reinforced Metal Frame W&W/o Header: The durable construction guarantees long-lasting performance, making the Rigid PAC Box Filter ideal for high-demand applications.
- Leak-Proof Bonding: All media edges are bonded to the frame, eliminating the risk of bypass and ensuring effective filtration.
- Available in Multiple Efficiencies: Available in MERV 12, MERV 13, MERV 14, and MERV 15 to meet various air filtration requirements.

#### Performance Specifications:

Filter Depth / Media Grade	MERV 12	MERV 13	MERV 14	MERV 15
12" Box	0.29 w.g.	0.35 w.g.	0.44 w.g.	0.49 w.g.
12" Header	0.30 w.g.	0.36 w.g.	0.46 w.g.	0.50 w.g.

#### Filter Sizes and Media Area (Sq. Ft.):

Filter Size (W x H x D)	Media Area (Sq. Ft.)
24" x 24" x 12" - Box	66 sq. ft.
24" x 24" x 12" - Header	57 sq. ft.

#### Applications:

The Rigid PAC Box Filter is suitable for:

- Variable Air Volume (VAV) Systems: Designed to maintain stable filtration under fluctuating air volumes.
- Turbulent Airflow Applications: The rigid structure and bonded media edges ensure consistent performance in environments with high air turbulence.
- Commercial & Industrial HVAC Systems: An ideal solution for high-demand environments where superior air quality and durability are critical.



#### Contact Information:

Purity Air Filters  
Phone: 941-275-6055  
Email: [orders@purityairfilters.com](mailto:orders@purityairfilters.com)  
Website: [www.purityairfilters.com](http://www.purityairfilters.com)

# Rigid PAC Box Filter



## RIGID PAC BOX FILTER

### SPECS:

EFFICIENCY: MERV 13 / 85%

MEDIA: Laminated Synthetic

FRAME: GI Single Header

### Sizes:

**24" x 24" x 12"** (594x594x292)

PART NUMBER: 11-23-2320300-1252-0

*PRICE: Quote*

**12" x 24" x 12"** (289x592x292)

PART NUMBER: 11-23-2320300-7051-0

*PRICE: Quote*

**20" x 24" x 12"** (492x594x292)

PART NUMBER: 11-23-2320300-85-0

*PRICE: Quote*

**20" x 20" x 12"** (490x490x292)

PART NUMBER: 11-23-2320300-1289-0

*PRICE: Quote*



### Contact Information:

Purity Air Filters

Phone: 941-275-6055

Email: [orders@purityairfilters.com](mailto:orders@purityairfilters.com)

Website: [www.purityairfilters.com](http://www.purityairfilters.com)



# Rigid PAC Box Filter



## RIGID PAC BOX FILTER

### SPECS:

EFFICIENCY: MERV 14 / 95%

MEDIA: Laminated Synthetic

FRAME: GI BOX Type

### Sizes:

**24" x 24" x 12" (594x594x292)**

PART NUMBER: 11-23-2420100-1252-0

*PRICE: Quote*

**12" x 24" x 12" (289x594x292)**

PART NUMBER: 11-23-2420100-7051-0

*PRICE: Quote*

**20" x 24" x 12" (492x594x292)**

PART NUMBER: 11-23-2420100-85-0

*PRICE: Quote*

**20" x 20" x 12" (492x492x292)**

PART NUMBER: 11-23-2420100-4429-0

*PRICE: Quote*



### Contact Information:

Purity Air Filters

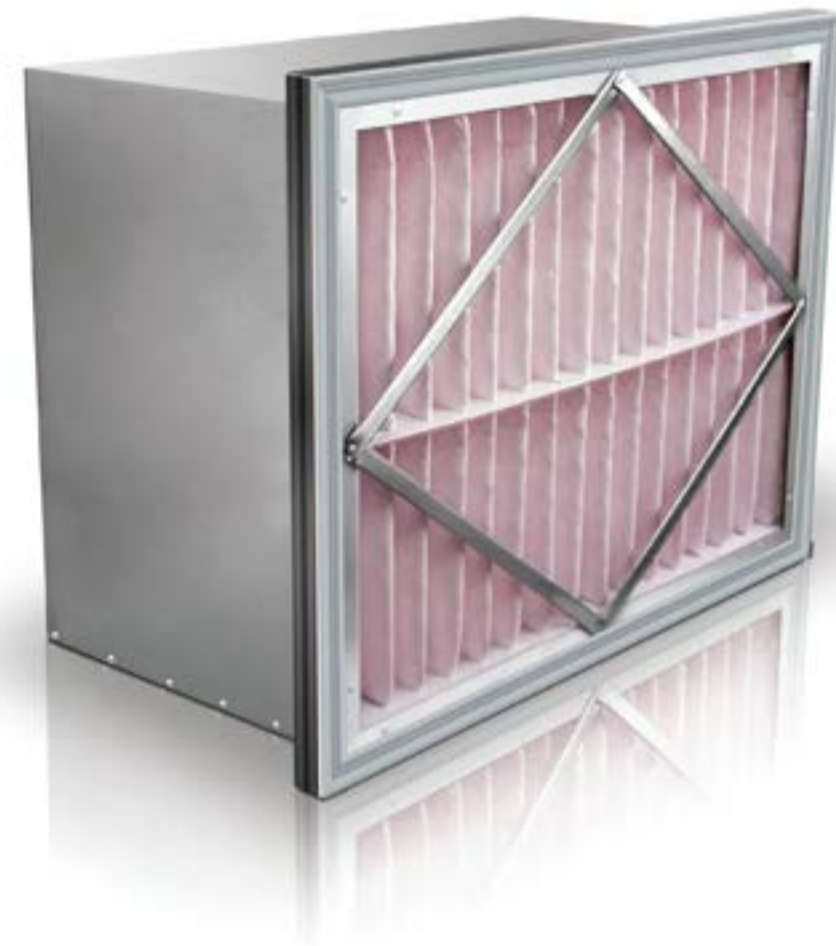
Phone: 941-275-6055

Email: [orders@purityairfilters.com](mailto:orders@purityairfilters.com)

Website: [www.purityairfilters.com](http://www.purityairfilters.com)



# Rigid PAC Box Filter



## RIGID PAC BOX FILTER

### SPECS:

EFFICIENCY: MERV 14 / 95%

MEDIA: Laminated Synthetic

FRAME: GI Single Header

### Sizes:

**24" x 24" x 12" (592x592x292)**

PART NUMBER: 11-23-2420300-84-0

PRICE: Quote

**12" x 24" x 12" (289x594x292)**

PART NUMBER: 11-23-2420300-7051-0

PRICE: Quote

**20" x 24" x 12" (492x594x292)**

PART NUMBER: 11-23-2420300-85-0

PRICE: Quote

**20" x 20" x 12" (492x492x292)**

PART NUMBER: 11-23-2420300-1289-0

PRICE: Quote



### Contact Information:

Purity Air Filters

Phone: 941-275-6055

Email: [orders@purityairfilters.com](mailto:orders@purityairfilters.com)

Website: [www.purityairfilters.com](http://www.purityairfilters.com)



# Rigid PAC Box Filter



## RIGID PAC BOX FILTER

### SPECS:

EFFICIENCY: MERV 15 / 98%

MEDIA: Laminated Synthetic

FRAME: GI BOX Type

### Sizes:

**24" x 24" x 12"** (594x594x292)

PART NUMBER: 11-23-2520100-1252-0

PRICE: Quote

**12" x 24" x 12"** (289x594x292)

PART NUMBER: 11-23-2520100-7051-0

PRICE: Quote

**20" x 24" x 12"** (492x594x292)

PART NUMBER: 11-23-2520100-85-0

PRICE: Quote

**20" x 20" x 12"** (492x492x292)

PART NUMBER: 11-23-2520100-4429-0

PRICE: Quote



### Contact Information:

Purity Air Filters

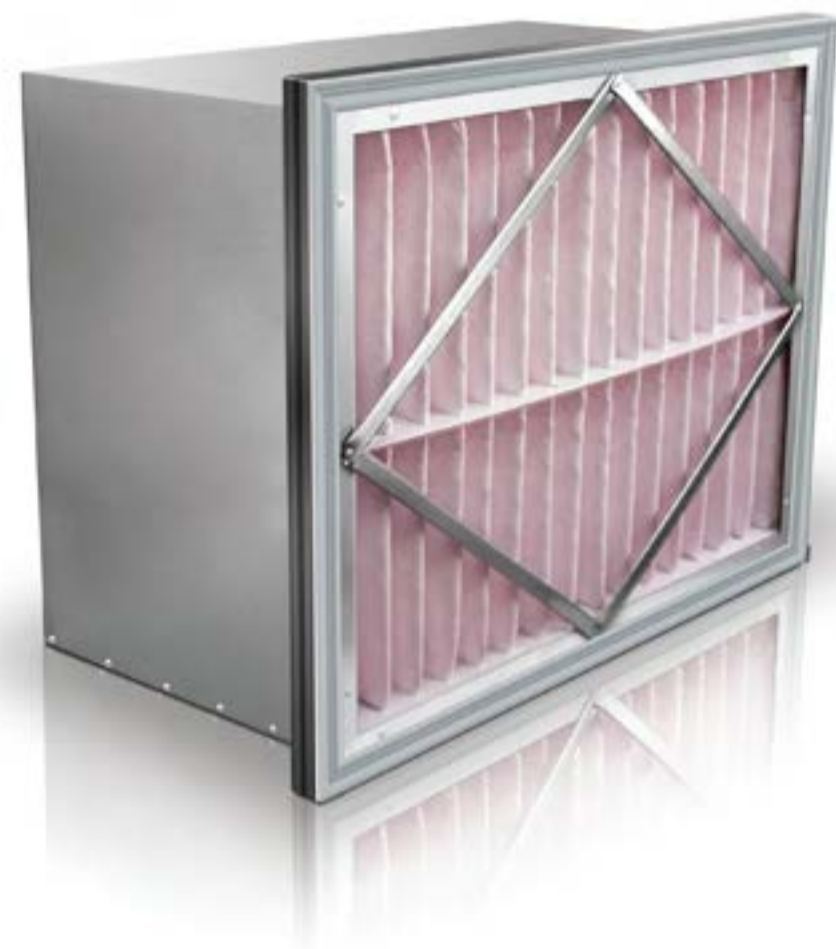
Phone: 941-275-6055

Email: [orders@purityairfilters.com](mailto:orders@purityairfilters.com)

Website: [www.purityairfilters.com](http://www.purityairfilters.com)



# Rigid PAC Box Filter



## RIGID PAC BOX FILTER

### SPECS:

EFFICIENCY: MERV 15 / 98%

MEDIA: Laminated Synthetic

FRAME: GI Single Header

### Sizes:

**24" x 24" x 12" (594x594x292)**

PART NUMBER: 11-23-2520300-1252-0

*PRICE: Quote*

**12" x 24" x 12" (289x594x292)**

PART NUMBER: 11-23-2520300-7051-0

*PRICE: Quote*

**20" x 24" x 12" (492x594x292)**

PART NUMBER: 11-23-2520300-85-0

*PRICE: Quote*

**20" x 20" x 12" (492x492x292)**

PART NUMBER: 11-23-2520300-4429-0

*PRICE: Quote*



### Contact Information:

Purity Air Filters

Phone: 941-275-6055

Email: [orders@purityairfilters.com](mailto:orders@purityairfilters.com)

Website: [www.purityairfilters.com](http://www.purityairfilters.com)



# V-Cell Synthetic



## V-Cell Synthetic Filter High-Strength, High-Efficiency Air Filtration

### Product Overview:

The V-Cell Synthetic Filter is designed with high-strength synthetic media that offers excellent burst resistance and extended filtration life. Its large surface area combined with a compact, robust structure makes it a top choice for demanding HVAC systems. This filter is lightweight, fully incinerable, and easy to install, providing an eco-friendly and efficient solution for maintaining clean air in commercial and industrial environments.

### Key Features:

- High Strength Synthetic Media: Ensures the filter can withstand high airflow and pressure with superior burst resistance.
- Large Surface Area: Provides extended filtration capacity without sacrificing airflow or efficiency.
- Non-Metallic Construction: Fully incinerable for eco-friendly disposal, lightweight for easy handling and installation.
- Available in Multiple Efficiencies: Available in MERV 13, MERV 14, MERV 15, and MERV 16A to meet a wide range of filtration requirements.

### Performance Specifications:

Media Grade	Initial Resistance ("Wg) @ 2.54 m/s	Initial Resistance ("Wg) @ 3.25 m/s
MERV 16A	0.25 w.g.	0.36 w.g.
MERV 15	0.24 w.g.	0.35 w.g.
MERV 14	0.23 w.g.	0.33 w.g.
MERV 13	0.21 w.g.	0.32 w.g.

### Filter Sizes and Media Area (Sq. Ft.):

Filter Size (W x H x D)	Media Area (Sq. Ft.)
24" x 24" x 12" - Header	161 sq. ft.

### Applications:

The V-Cell Synthetic Filter is ideal for commercial and industrial HVAC systems requiring high-efficiency filtration and durability. Its non-metallic, fully incinerable design makes it environmentally friendly, while its robust construction ensures consistent, reliable performance in demanding applications.



### Contact Information:

Purity Air Filters  
Phone: 941-275-6055  
Email: [orders@purityairfilters.com](mailto:orders@purityairfilters.com)  
Website: [www.purityairfilters.com](http://www.purityairfilters.com)



# V-Cell FG Filter



## V-Cell FG Filter High-Strength Glass Fiber Filter for Efficient Air Filtration

### Product Overview:

The V-Cell FG Filter is constructed using high-strength glass fiber media combined with PU pot-ting, providing exceptional burst resistance and durability. With its large surface area and robust, compact design, this filter delivers efficient, long-lasting performance in a variety of commercial and industrial HVAC systems. Its non-metallic construction makes it fully incinerable, lightweight, and easy to install.

### Key Features:

- High-Strength Glass Fiber Media: Combined with PU potting for increased burst resistance and extended service life.
- Large Surface Area: Maximizes filtration efficiency while maintaining consistent airflow.
- Non-Metallic & Fully Incinerable: Eco-friendly design ensures easy disposal and lightweight handling.
- Available in Multiple Efficiencies: Available in MERV 11, MERV 13, MERV 14, and MERV 15 to meet various air quality and filtration needs.

### Performance Specifications:

Media Grade	Initial Resistance ("Wg) @ 2.54 m/s	Initial Resistance ("Wg) @ 3.25 m/s
MERV 15	0.44 w.g.	0.58 w.g.
MERV 14	0.40 w.g.	0.50 w.g.
MERV 13	0.36 w.g.	0.46 w.g.
MERV 11	0.31 w.g.	0.40 w.g.

### Filter Sizes and Media Area (Sq. Ft.):

Filter Size (W x H x D)	Media Area (Sq. Ft.)
24" x 24" x 12" - Header	198 sq. ft.

### Applications:

The V-Cell FG Filter is ideal for high-demand HVAC systems in commercial and industrial environments. With its eco-friendly, non-metallic design, it provides efficient filtration while allowing for easy installation and disposal, making it a cost-effective and sustainable air filtration solution.



### Contact Information:

Purity Air Filters  
Phone: 941-275-6055  
Email: [orders@purityairfilters.com](mailto:orders@purityairfilters.com)  
Website: [www.purityairfilters.com](http://www.purityairfilters.com)

# V-Cell Synthetic



## V-Cell Synthetic FILTER

### SPECS:

EFFICIENCY: MERV 11  
MEDIA: Micro Glass  
FRAME: ABS Plastic single header

### Sizes:

**24" x 24" x 12" (592x592x292)**

PART NUMBER: 11-18-1210131-84-0

PRICE: Quote

**12" x 24" x 12" (592x287x292)**

PART NUMBER: 11-18-1210131-195-0

PRICE: Quote

**24" x 24" x 12" (592x592x292)**

PART NUMBER: 11-18-1410050-84-0

PRICE: Quote

**12" x 24" x 12" (592x287x292)**

PART NUMBER: 11-18-1410050-195-00

PRICE: Quote

**20" x 20" x 12" (490x490x292)**

PART NUMBER: 11-18-1410061-1289-0

PRICE: Quote



### Contact Information:

Purity Air Filters  
Phone: 941-275-6055  
Email: [orders@purityairfilters.com](mailto:orders@purityairfilters.com)  
Website: [www.purityairfilters.com](http://www.purityairfilters.com)



# V-Cell Synthetic



## V-Cell Synthetic FILTER

### SPECS:

EFFICIENCY: MERV 14 / 95%  
MEDIA: Micro Glass  
FRAME: ABS Plastic single header

### Sizes:

**20" x 16" x 12" (490x389x292)**

PART NUMBER: 11-18-1410161-172111-0

*PRICE: Quote*

**24" x 24" x 12" (592x592x292)**

PART NUMBER: 11-18-1410031-1252-0

*PRICE: Quote*

**12" x 24" x 12" (592x287x292)**

PART NUMBER: 11-18-1410000-195-0

*PRICE: Quote*

**20" x 24" x 12" (592x490x292)**

PART NUMBER: 11-18-1410000-310-0

*PRICE: Quote*

**24" x 24" x 12" (592x592x292)**

PART NUMBER: 11-18-1510031-84-0

*PRICE: Quote*



### Contact Information:

Purity Air Filters  
Phone: 941-275-6055  
Email: [orders@purityairfilters.com](mailto:orders@purityairfilters.com)  
Website: [www.purityairfilters.com](http://www.purityairfilters.com)

# V-Cell Synthetic



## V-Cell Synthetic FILTER

### SPECS:

EFFICIENCY: MERV 15 / 98%  
MEDIA: Micro Glass  
FRAME: ABS Plastic single header

### Sizes:

**12" x 24" x 12" (592x287x292)**

PART NUMBER: 11-18-1510031-195-0

*PRICE: Quote*

**20" x 24" x 12" (592x490x292)**

PART NUMBER: 11-18-1510131-310-0

*PRICE: Quote*

**24" x 24" x 12" (592x592x292)**

PART NUMBER: 11-21-1840020-84-0

*PRICE: Quote*

**12" x 24" x 12" (592x287x292)**

PART NUMBER: 11-21-1810020-195-0

*PRICE: Quote*

**20" x 24" x 12" (592x490x292)**

PART NUMBER: 11-21-1810020-310-0

*PRICE: Quote*



### Contact Information:

Purity Air Filters  
Phone: 941-275-6055  
Email: [orders@purityairfilters.com](mailto:orders@purityairfilters.com)  
Website: [www.purityairfilters.com](http://www.purityairfilters.com)



# Ultra PAC Bag Filter



## Ultra PAC Bag Filter High-Efficiency Air Filtration for Commercial and Industrial Applications

### Product Overview:

The Ultra PAC Bag Filter utilizes high-lofted micro-fine glass fiber media, offering superior dust-holding capacity and long-lasting filtration performance. Designed with tapered bag construction, this filter ensures optimal airflow and efficiency, making it an ideal choice for environments requiring high-efficiency air filtration. Available in multiple MERV ratings, the Ultra PAC Bag Filter meets various filtration needs, from basic to more demanding applications.

### Key Features:

- High Dust Holding Capacity: The advanced micro-fine glass fiber media captures a large volume of dust particles, improving air quality and extending the filter's service life.
- Tapered Bag Design: This design enhances the bag's performance by optimizing airflow and maintaining consistent filtration efficiency.
- Available Efficiency Levels: The Ultra PAC Bag Filter is available in MERV 10, MERV 11, MERV 13, MERV 14, and MERV 15, ensuring a tailored solution for different air filtration requirements.

### Performance Specifications:

Media Grade	15" Depth-8P	22" Depth-8P	30" Depth-8P
MERV 10	0.45 w.g.	0.31 w.g.	0.25 w.g.
MERV 13	0.75 w.g.	0.61 w.g.	0.39 w.g.
MERV 14	0.95 w.g.	0.67 w.g.	0.49 w.g.
MERV 15	0.97 w.g.	0.75 w.g.	0.59 w.g.

### Filter Sizes and Media Area (Sq. Ft.):

Filter Size (W x H x D) Media Area (Sq. M)

24" x 24" x 30" - 8P	7.21 sq. m
24" x 24" x 22" - 8P	5.20 sq. m
24" x 24" x 15" - 8P	3.60 sq. m

### Applications:

The Ultra PAC Bag Filter is ideal for commercial and industrial HVAC systems that require reliable, high-efficiency filtration. It is designed for use in environments that demand superior dust-holding capacity and long service life, ensuring consistent air quality in demanding conditions.



### Contact Information:

Purity Air Filters  
Phone: 941-275-6055  
Email: [orders@purityairfilters.com](mailto:orders@purityairfilters.com)  
Website: [www.purityairfilters.com](http://www.purityairfilters.com)

# Ultra PAC Bag Filter



## ULTRA PAC BAG FILTER

### SPECS:

EFFICIENCY: MERV 13 / 85%

MEDIA: Synthetic

FRAME: GI 20mm header

### Sizes:

**24" x 24" x 22"**

PART NUMBER: 11-15-1322004-1868-0

*PRICE: Quote*

**12" x 24" x 22"**

PART NUMBER: 11-15-1322001-2599-0

*PRICE: Quote*

**24" x 24" x 22"**

PART NUMBER: 11-15-1322007-1868-0

*PRICE: Quote*

**12" x 24" x 22"**

PART NUMBER: 11-15-1322003-2599-0

*PRICE: Quote*



### Contact Information:

Purity Air Filters

Phone: 941-275-6055

Email: [orders@purityairfilters.com](mailto:orders@purityairfilters.com)

Website: [www.purityairfilters.com](http://www.purityairfilters.com)



# Ultra PAC Bag Filter



## ULTRA PAC BAG FILTER

### SPECS:

EFFICIENCY: MERV 14 / 95%

MEDIA: Synthetic

FRAME: GI 20mm header

### Sizes:

**24" x 24" x 22"**

PART NUMBER: 11-15-1422004-1868-0

*PRICE: Quote*

**12" x 24" x 22"**

PART NUMBER: 11-15-1422001-2599-0

*PRICE: Quote*

**24" x 24" x 22"**

PART NUMBER: 11-15-1422007-1868-0

*PRICE: Quote*

**12" x 24" x 22"**

PART NUMBER: 11-15-1422003-2599-0

*PRICE: Quote*



### Contact Information:

Purity Air Filters

Phone: 941-275-6055

Email: [orders@purityairfilters.com](mailto:orders@purityairfilters.com)

Website: [www.purityairfilters.com](http://www.purityairfilters.com)

# C-Cell Synthetic



## CCell Synthetic Mini Pleat Panel Filter

### Product Overview:

The CCell Synthetic Mini Pleat Panel Filter is a high-efficiency solution designed for superior air filtration in various HVAC systems. Engineered with special synthetic media, this filter is available in multiple depths and configurations, making it a versatile option for commercial and industrial applications. The mini pleat design maximizes media surface area while maintaining low airflow resistance, ensuring optimal performance and long service life.

### Key Features:

- High-Efficiency Mini Pleat Design: Provides maximum surface area for improved filtration and airflow.
- Available in Multiple Depths: Offered in 2" and 4" box styles, as well as 4" and 6" options with a one-sided header for easy installation.
- Versatile Media Grades: Available with MERV 13, MERV 14, MERV 15, and MERV 16A rated synthetic media to meet a variety of filtration requirements.

### Performance Specifications:

Media Grade	2" Box	4" Box	4" Header	6" Header
MERV 13	0.27 w.g.	0.26 w.g.	0.29 w.g.	0.37 w.g.
MERV 14	0.30 w.g.	0.28 w.g.	0.33 w.g.	0.40 w.g.
MERV 15	0.42 w.g.	0.28 w.g.	0.34 w.g.	0.42 w.g.

### Filter Sizes and Media Area (Sq. Ft.):

Filter Size	2" Box	4" Box	4" Header	6" Header
24" x 24"	58 sq. ft.	130 sq. ft.	103 sq. ft.	133 sq. ft.

### Applications:

Ideal for commercial and industrial HVAC systems where high-efficiency filtration is needed. The CCell Synthetic Mini Pleat is suited for environments requiring improved indoor air quality and re-duced energy consumption.



### Contact Information:

Purity Air Filters  
Phone: 941-275-6055  
Email: [orders@purityairfilters.com](mailto:orders@purityairfilters.com)  
Website: [www.purityairfilters.com](http://www.purityairfilters.com)



## C-Cell Synthetic



## C-CELL SYNTHETIC FILTER

### SPECS:

EFFICIENCY: MERV 14  
MEDIA: Synthetic  
FRAME: ABS Plastic BOX Type

### Sizes:

**24" x 24" x 2"** (592x592x45mm)

PART NUMBER: 11-20-1770100-81-0

*PRICE: Quote*

**24" x 24" x 4"** (592x592x96mm)

PART NUMBER: 11-20-1770300-96-0

*PRICE: Quote*

**16" x 20" x 1"** (394x495x19mm)

PART NUMBER: 11-20-1860000-38031-0

*PRICE: Quote*

**16" x 25" x 1"** (394x622x19mm)

PART NUMBER: 11-20-1860000-131267-0

*PRICE: Quote*

**20" x 20" x 1"** (495x495x19mm)

PART NUMBER: 11-20-1860000-43770-0

*PRICE: Quote*



### Contact Information:

Purity Air Filters  
Phone: 941-275-6055  
Email: [orders@purityairfilters.com](mailto:orders@purityairfilters.com)  
Website: [www.purityairfilters.com](http://www.purityairfilters.com)

# C-Cell Synthetic



## C-CELL SYNTHETIC FILTER

### SPECS:

EFFICIENCY: MERV 14  
MEDIA: Synthetic  
FRAME: ABS Plastic BOX Type

### Sizes:

**24" x 24" x 1"** (594x594x19mm)

PART NUMBER: 11-20-1860000-131268-0

*PRICE: Quote*

**12" x 24" x 2"** (287x592x45mm)

PART NUMBER: 11-20-1860000-131247-0

*PRICE: Quote*

**16" x 25" x 2"** (622x393x45mm)

PART NUMBER: 11-20-1870100-137947-0

*PRICE: Quote*

**20" x 20" x 2"** (490x490x45mm)

PART NUMBER: 11-20-1870100-615-0

*PRICE: Quote*

**20" x 24" x 2"** (592x490x45mm)

PART NUMBER: 11-20-1870100-3098-0

*PRICE: Quote*



### Contact Information:

Purity Air Filters  
Phone: 941-275-6055  
Email: [orders@purityairfilters.com](mailto:orders@purityairfilters.com)  
Website: [www.purityairfilters.com](http://www.purityairfilters.com)



# C-Cell Synthetic



## C-CELL SYNTHETIC FILTER

### SPECS:

EFFICIENCY: MERV 15  
MEDIA: Synthetic  
FRAME: ABS Plastic BOX Type

### Sizes:

**24" x 24" x 2"** (592x592x45mm)

PART NUMBER: 11-20-1870100-191-0

*PRICE: Quote*

**20" x 25" x 2"** (622x495x45mm)

PART NUMBER: 11-20-1870100-5676-0

*PRICE: Quote*

**12" x 24" x 4"** (592x287x96mm)

PART NUMBER: 11-20-1870300-27679-0

*PRICE: Quote*

**16" x 24" x 4"** (592x390x96mm)

PART NUMBER: 11-20-1870300-163990-0

*PRICE: Quote*

**16" x 25" x 4"** (622x393x96mm)

PART NUMBER: 11-20-1870300-163988-0

*PRICE: Quote*



### Contact Information:

Purity Air Filters  
Phone: 941-275-6055  
Email: [orders@purityairfilters.com](mailto:orders@purityairfilters.com)  
Website: [www.purityairfilters.com](http://www.purityairfilters.com)

## C-Cell Synthetic



## C-CELL SYNTHETIC FILTER

### SPECS:

EFFICIENCY: MERV 15  
MEDIA: Synthetic  
FRAME: ABS Plastic BOX Type

### Sizes:

**20" x 20" x 4"** (490x490x96mm)

PART NUMBER: 11-20-1870300-36782-0

PRICE: Quote

**20" x 24" x 4"** (592x490x96mm)

PART NUMBER: 11-20-1870300-163987-0

PRICE: Quote

**20" x 25" x 4"** (622x495x96mm)

PART NUMBER: 11-20-1870300-163983-0

PRICE: Quote

**24" x 24" x 4"** (592x592x96mm)

PART NUMBER: 11-20-1870300-1664-0

PRICE: Quote

**12" x 24" x 4"** (592x287x96mm)

PART NUMBER: 11-20-1870100-27679-0

PRICE: Quote



### Contact Information:

Purity Air Filters  
Phone: 941-275-6055  
Email: [orders@purityairfilters.com](mailto:orders@purityairfilters.com)  
Website: [www.purityairfilters.com](http://www.purityairfilters.com)



# C-Cell Synthetic



## C-CELL SYNTHETIC FILTER

### SPECS:

EFFICIENCY: MERV 15  
MEDIA: Synthetic  
FRAME: ABS Plastic BOX Type

### Sizes:

**16" x 20" x 4" (490x390x96mm)**

PART NUMBER: 11-20-1870100-163989-0

*PRICE: Quote*

**16" x 24" x 4" (490x490x96mm)**

PART NUMBER: 11-20-1870100-163990-0

*PRICE: Quote*

**16" x 25" x 4" (622x393x96mm)**

PART NUMBER: 11-20-1870100-163988-0

*PRICE: Quote*

**20" x 20" x 4" (490x490x96mm)**

PART NUMBER: 11-20-1870100-36782-0

*PRICE: Quote*

**20" x 24" x 4" (592x490x96mm)**

PART NUMBER: 11-20-1870100-36784-0

*PRICE: Quote*



### Contact Information:

Purity Air Filters  
Phone: 941-275-6055  
Email: [orders@purityairfilters.com](mailto:orders@purityairfilters.com)  
Website: [www.purityairfilters.com](http://www.purityairfilters.com)

# C-Cell Synthetic



## C-CELL SYNTHETIC FILTER

### SPECS:

EFFICIENCY: MERV 15  
MEDIA: Synthetic  
FRAME: ABS Plastic BOX Type

### Sizes:

**20" x 25" x 4" (622x495x96mm)**

PART NUMBER: 11-20-1870000-163983-0

*PRICE: Quote*

**24" x 24" x 4" (592x592x96mm)**

PART NUMBER: 11-20-1870000-1664-0

*PRICE: Quote*



### Contact Information:

Purity Air Filters  
Phone: 941-275-6055  
Email: [orders@purityairfilters.com](mailto:orders@purityairfilters.com)  
Website: [www.purityairfilters.com](http://www.purityairfilters.com)



# Super Pleat Filter



## Super Pleat Filter (Bev. Board) High-Performance Pleated Filter for Efficient Air Filtration

### Product Overview:

The Super Pleat Filter (Bev. Board) is constructed with 100% synthetic fibers that are electrostatically charged, providing superior air filtration performance. The media is bonded to a metal grid on the air-exit side, preventing fluttering and maintaining the uniformity of the pleats. Encased in a heavy-duty, moisture-resistant, die-cut frame, this filter ensures durability and stable performance in demanding HVAC applications without wrapping, cracking, or distorting under normal operating conditions.

### Key Features:

- **100% Synthetic Fiber Media:** Incorporates electrostatically charged fibers for enhanced particle capture efficiency.
- **Metal Grid Support:** Bonded to the air-exit side to prevent media fluttering and maintain pleat uniformity.
- **Durable, Moisture-Resistant Frame:** The heavy-duty die-cut frame provides stability, ensuring the filter remains rigid and does not warp or crack during use.
- **Available Efficiencies:** Offered in MERV 11 and MERV 13 for superior air filtration.

### Performance Specifications:

Media Grade	Initial Resistance ("Wg) @ 2.54 m/s
MERV 11	1" Depth: 0.57 w.g.
MERV 13	1" Depth: 0.58 w.g.

### Filter Sizes and Media Area (Sq. Ft.):

Filter Size (W x H x D)	Media Area (Sq. Ft.)
24" x 24" x 4"	27 sq. ft.
24" x 24" x 2"	18 sq. ft.
24" x 24" x 1"	9 sq. ft.

### Applications:

The Super Pleat Filter (Bev. Board) is ideal for residential and commercial HVAC systems that require efficient air filtration with long-lasting durability. Its electrostatically charged media and reinforced design ensure optimal airflow and particle capture, making it an excellent choice for maintaining indoor air quality.



### Contact Information:

Purity Air Filters  
Phone: 941-275-6055  
Email: [orders@purityairfilters.com](mailto:orders@purityairfilters.com)  
Website: [www.purityairfilters.com](http://www.purityairfilters.com)